

Pair if discs as seen , surface rust but good useable condition



Pair of Servo's for CSI / CSL working well when removed no faults



Front door dindow channels with furlflex



Kidney Grill CSI / CSL





Headlamp surrounds in reasonable condition with holes for wiper motors



Various door internals brackets



Chrome rearw indow trim



Door opening mechanisms both sides



spotlight cases decent chrome



Alloy number plate surround / mount



Drivers side (I think) front ¼ bumper with good chrome and rubber





Pair of overrides decent chrome





Upper adjustable steering column and surround



Boot lock with bracket (no Key)



New bushes in bag



CS badge and 4 wheel emblems



Clutch cylinder and rotor arm etc



Original CSI front seat belts





Front ¼ light window complete with door frame SCi / CSL good chrome complete with opener mechanism



¼ light window bare with very good chrome



Chrome trim bits **(Interior light has gone now)**



Nearside Csi / CSL door handle complete with good chrome



CSI petrol tank sender unit 225mm from under mounting to end

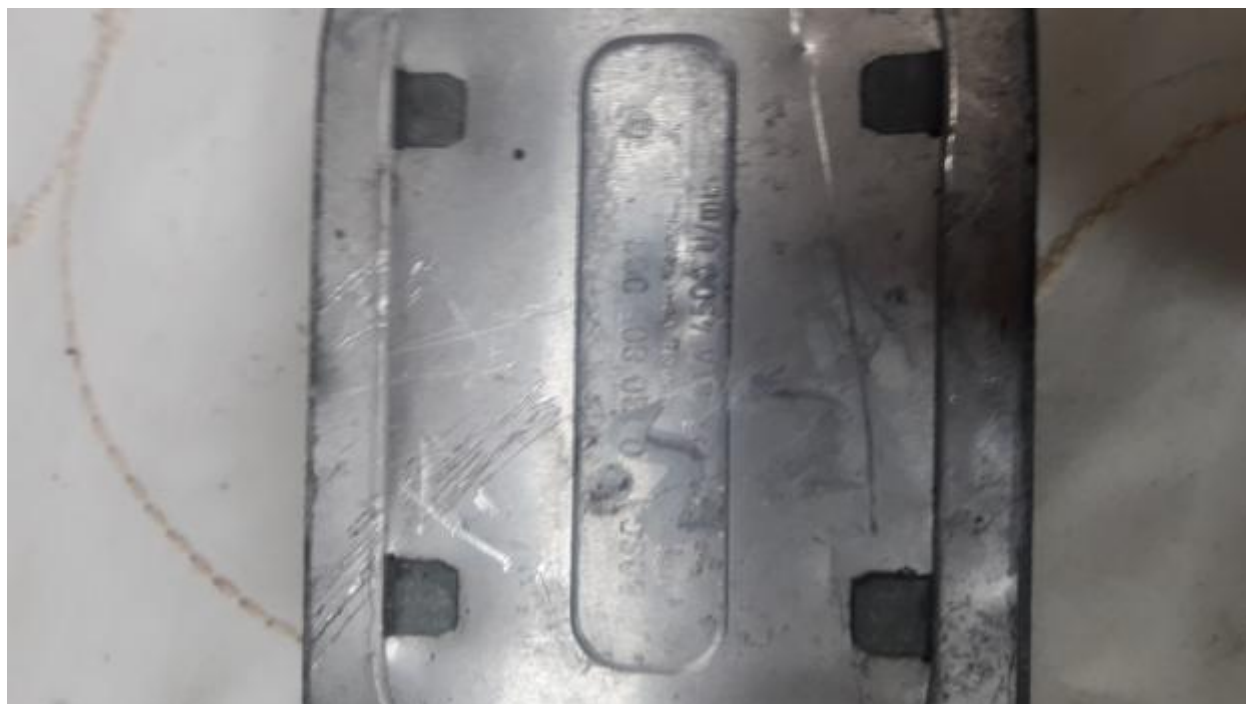




Pair of brand new track control arms Csi / CSL in Wallothnesh wrappings these are 320 from Wallothesch get a bargain at £200



CSi / CSL window / sunroof motor



CSI / CSL fam with hub assembly



FAN hub without fan



Set of good plug leads





Various relays, switches etc ( some now gone enquire please for specific items)





Master cylinder used but in ok condition not leaking



Wiring short loom





Air inlet for spares





Pressure cap in good condition



Wheel nuts good chrome



Fuel filters new





CSI / CSL sun visor clips



Pair of ball joints new



Mater cylinder top working order



Set of Hella headlamps good reflectors on all



Clutch slave cylinder new in box



Header tank in working condition no leaks

