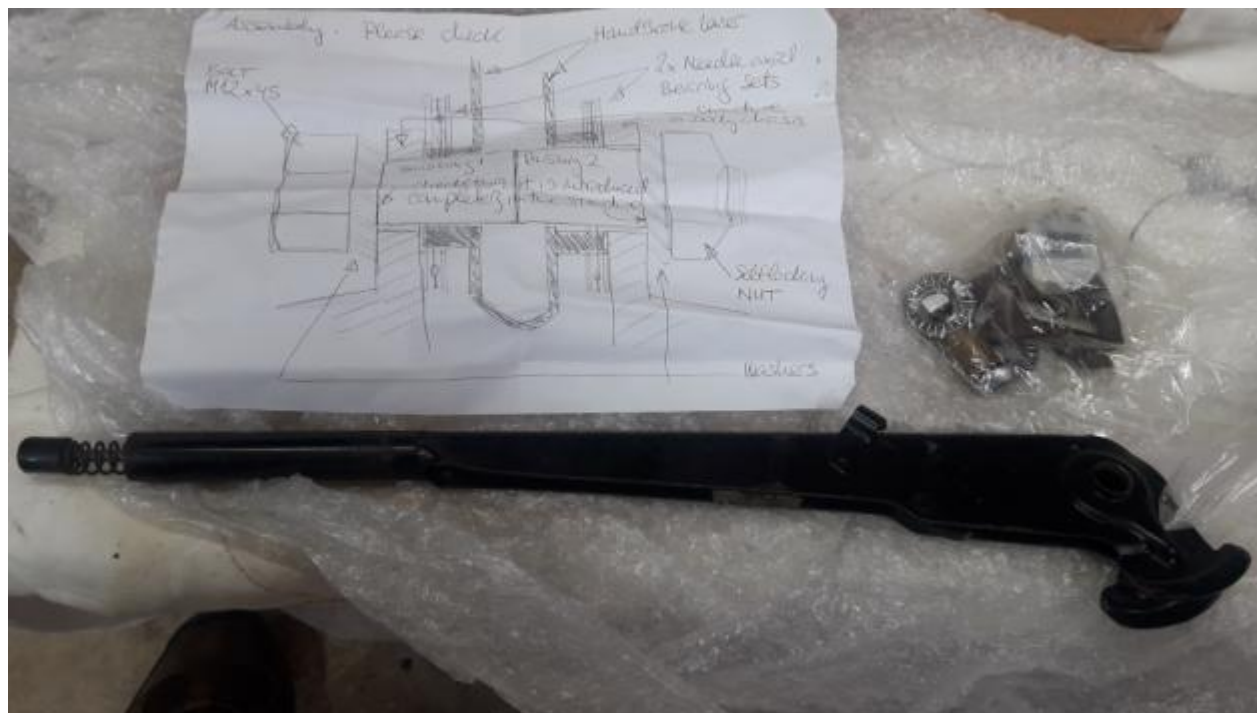
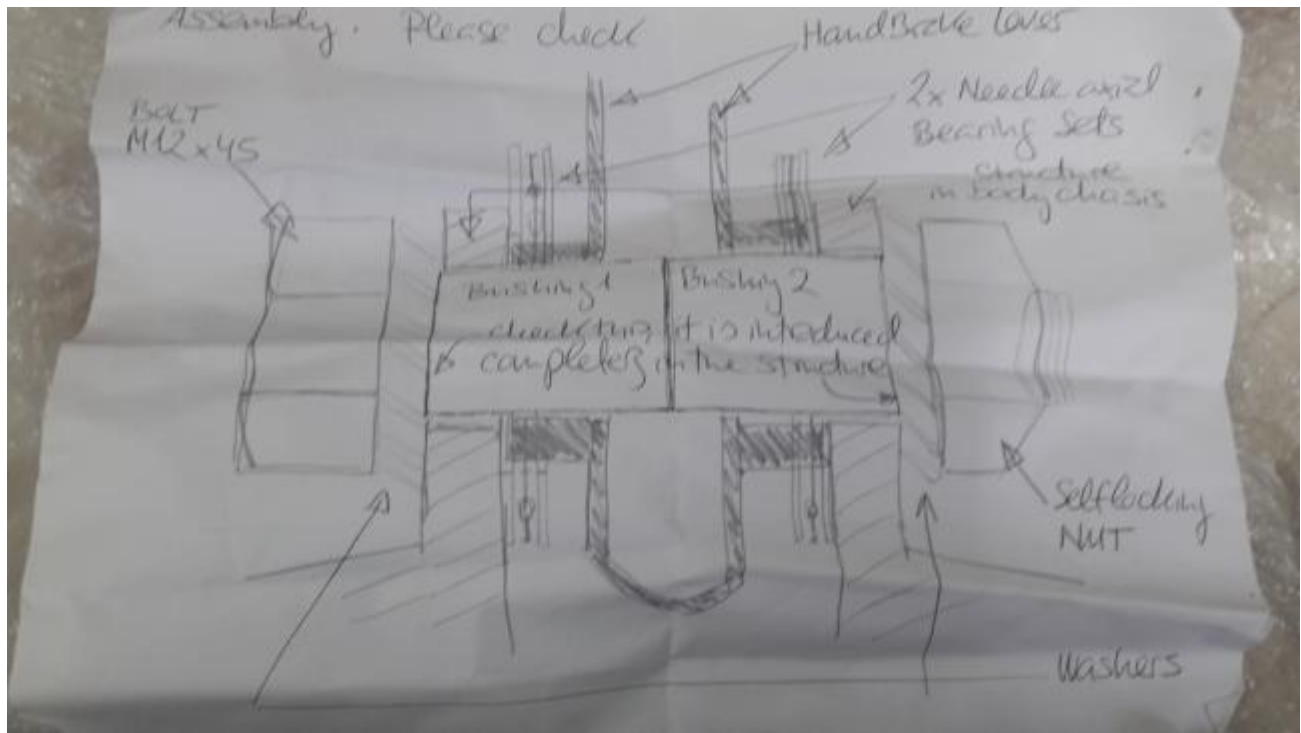


<https://e9coupe.com/forum/threads/the-handbrake-lever-upgrade-plus.11281/>

Hand brake complete for CSI /CSL with mod kit as above link and pictures





Front and rear electric window mechanisms CSI / CSL





CSI / CSL Door sill Chrome trims VGC



Pair if discs as seen , surface rust but good useable condition



Pair of Servo's for CSI / CSL working well when removed no faults





Front door dindow channels with furlflex



Kidney Grill CSI / CSL



Headlamp surrounds in reasonable condition with holes for wiper motors



Various door internals brackets





Chrome rearw indow trim



Door opening mechanisms both sides



Radio grill cover



Headlamp mounting bracket



spotlight cases decent chrome





Headlamp retaining rings decent chrome



Alloy number plate surround / mount



Drivers side front ¼ bumper with good chrome and rubber



Windscreen surround joining piece



Pair of overrides decent chrome





Power steering pump and steering box



Upper steering column and surround



Boot lock with bracket (no Key)



Clocks dash with loom and 3 gauges (no speedo)



New bushes in bag





Rear view mirror in good condition



CS badge and 4 wheel emblems



Clutch cylinder and rotor arm etc



Original CSI front seat belts



Pair of E28 window motors for upgrading rear window on Csi / CSL





Front ¼ light window complete with door frame SCi / CSL good chrome complete with opener mechanism



¼ light window bare with very good chrome



¼ light window opener mechanisms both good and working 1 with adjuster knob





Chrome trim bits



Nearside Csi / CSL door handle complete with good chrome





CSI petrol tank sender unit 225mm from under mounting to end



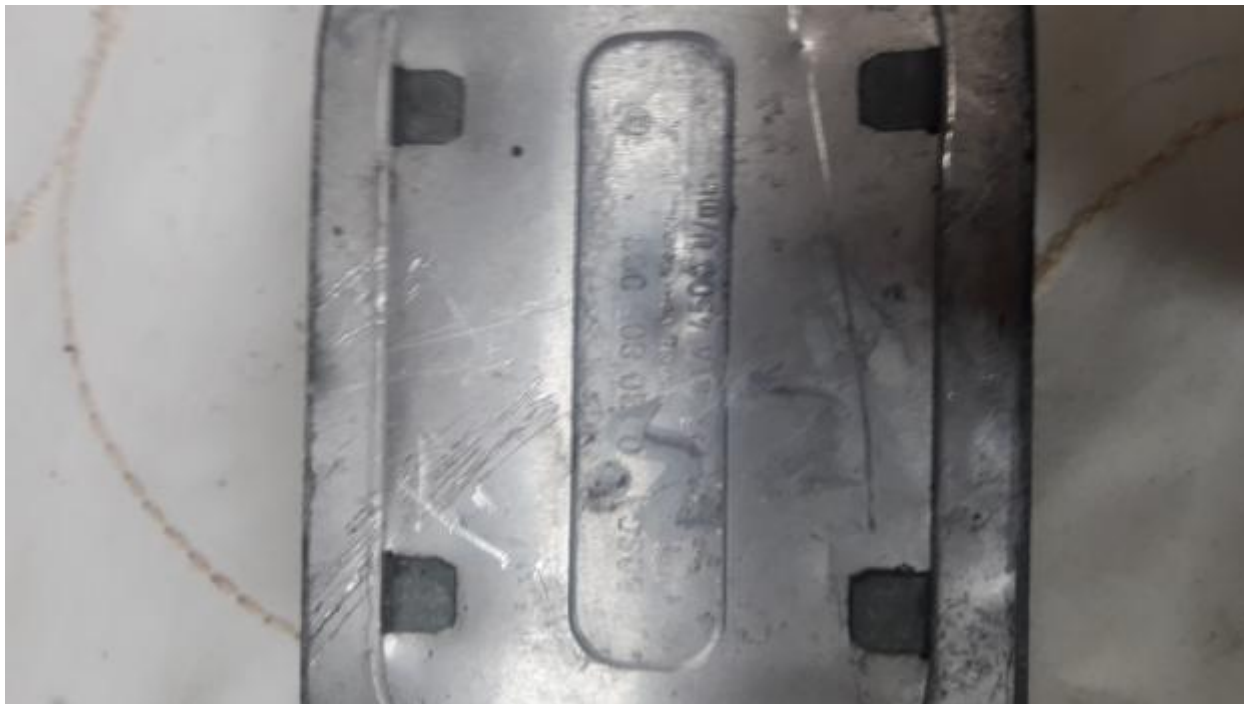
CSI /CSL sprung door pockets in black very good condition



Pair of brand new track control arms Csi / CSL in Wallothnesh wrappings



CSi / CSL window / sunroof motor





CSI / CSL fam with hub assembly



FAN hub without fan



Set of good plug leads



Various relays, witched etc







Master cylinder used but in ok condition not leaking



Wiring short loom



Ignition switch loom



Air inlet for spares







Pressure cap in good condition



Wheel nuts good chrome



Fuel filters new



CSI / CSL sun visor clips



Pair of ball joints new





Mater cylinder top working order



CSI / CSL rubber seals various in good useable condition



Set of headlamps good reflectors on all







Clutch slave cylinder new in box



Behind dash gauges wiring loom





Header tank in working condition no leaks



Front door window runner channels

