

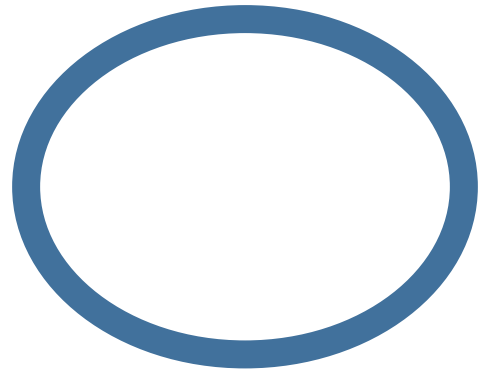
2002s —ONLY—

Rescue and Rehab of 2002 Cars and Parts

Replacing the Fuel Sender Tube Sleeve

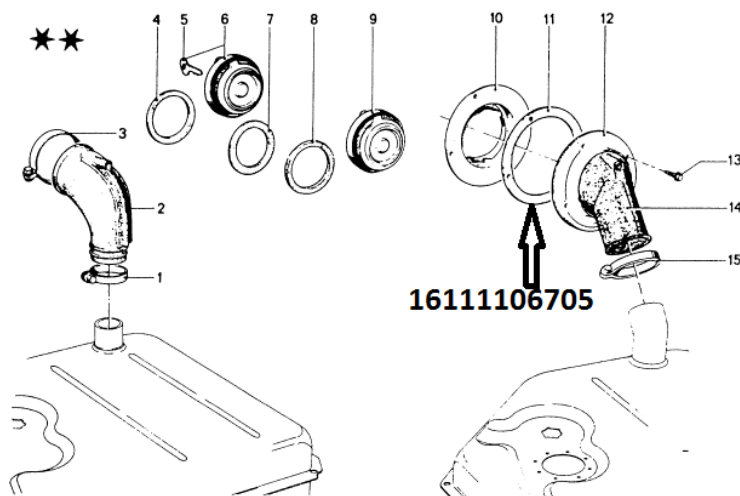
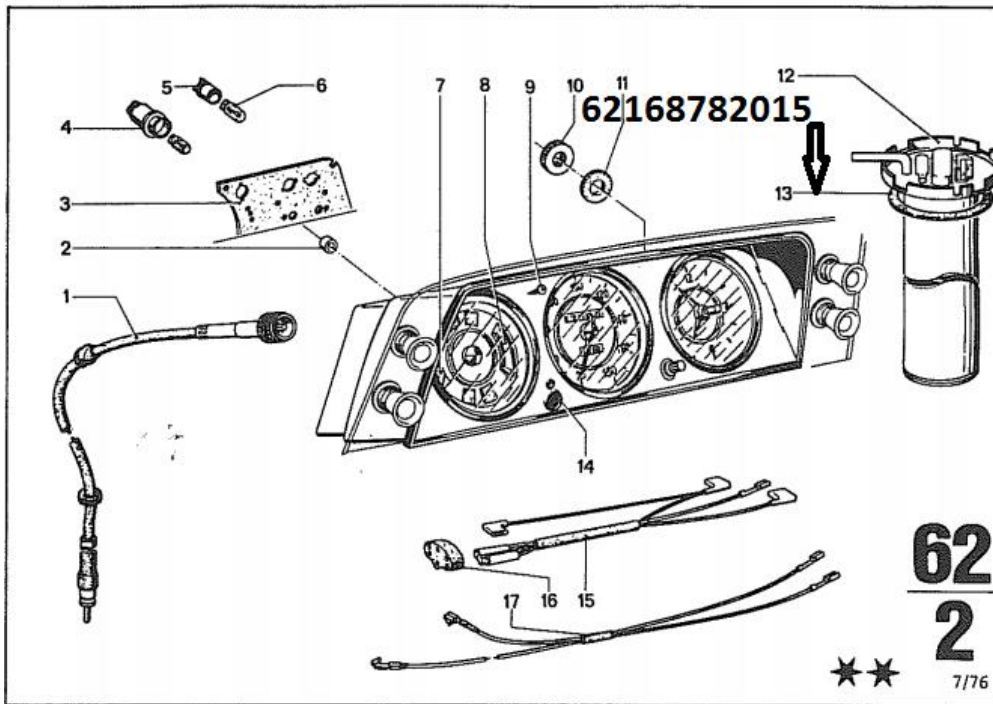
Over time the fuel sender tube sleeve deteriorates allowing gas to leak into the car. Or, more often than not, it was not replaced when new fuel hose was installed because a new one wasn't available. Well, here is a free one to solve this problem!

It is simple to replace. Remove the fuel hose from the sender tube, remove the old sleeve if it is still there, and slid the new one onto the filler tube. Re-install the fuel hose and voila! One more source of gas smell eliminated.



OVER FOR MORE ↓↓

Other parts to replace to eliminate fuel smell include the fuel hoses (8mm or 5/16" ID), O-ring under the fuel sender itself, and the gasket around the filler neck.



00019780

Compliments of:

2002s
—ONLY—

Rescue and Rehab of 2002 Cars and Parts

halboyles@2002sonly.com