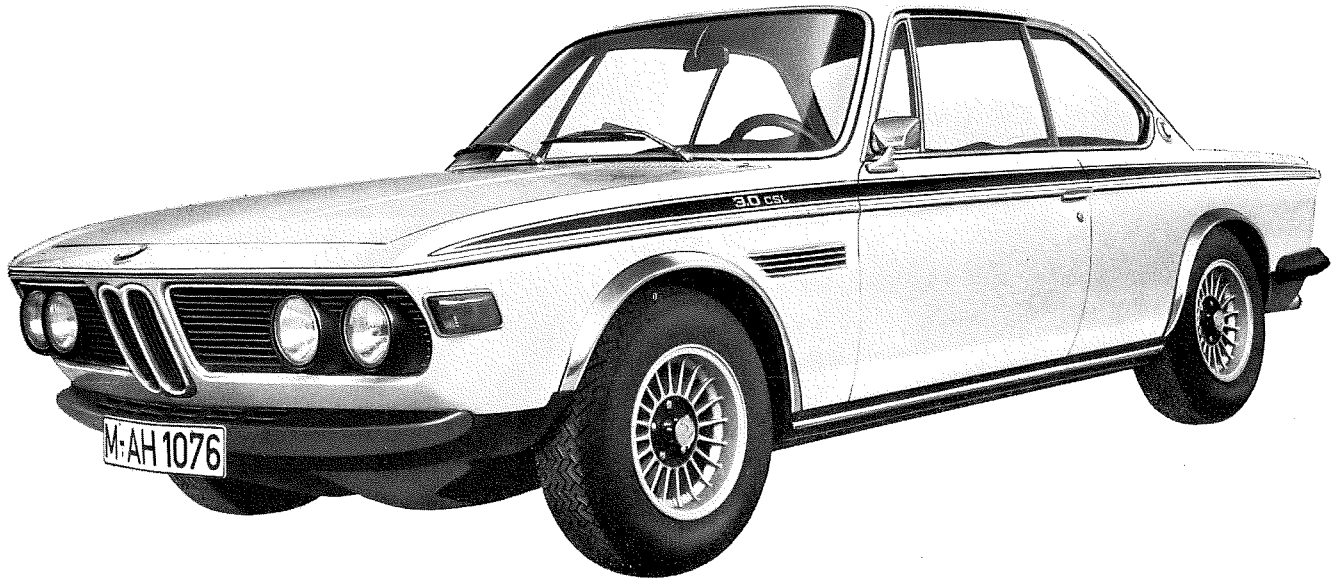




rcid 1614174

Owner's Manual 3.0 CSL

to be read in conjunction with the owner's manual BMW 3.0 CS/CSi



We reserve the right to modify designs, equipment and fittings in the interests of continuing technical development.

Dimensions, weights and performance data are quoted to generally accepted tolerances.

Errors and omissions excepted.

Contents

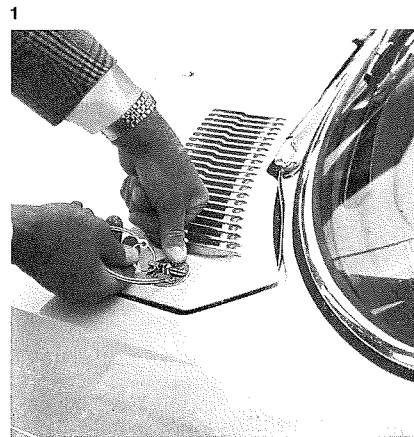
Engine compartment lid, luggage compartment lid	4
Luggage compartment lid, doors, electric twin-tone horns	5
Seat adjustment, map-reading lamp	6
Technical specifications	7

4 Engine compartment lid, luggage compartment lid

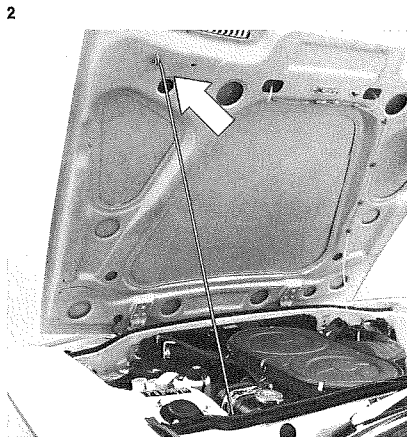
The engine compartment lid, the luggage compartment lid and the doors of your BMW 3.0 CSL are made of alloy to reduce the overall weight of the car.

One of the properties of light alloy is that it is considerably softer than sheet steel conventionally used in cars.

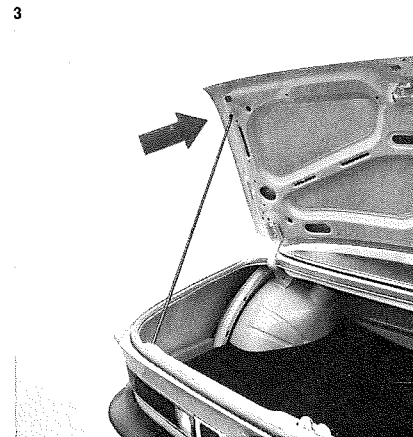
To open the **engine compartment lid** lift the holding ring of the locking mechanism and pull out the retaining pin. **Fig. 1**



Open engine compartment lid, introduce **lid stay** — located along the firewall — into the slot provided. **Fig. 2**



To keep weight to a minimum the luggage compartment lid is not lined, nor is a tool box provided. After opening the lid introduce the **lid stay** — located along the final body section — into the slot provided on the lid. **Fig. 3**



To prevent denting the engine compartment lid should only be closed by pressing the lid down with the flat of the hand in the area of the locking mechanism and then inserting the retaining pin. Close the luggage compartment lid by pressing down on the BWM emblem only. **Fig. 4**

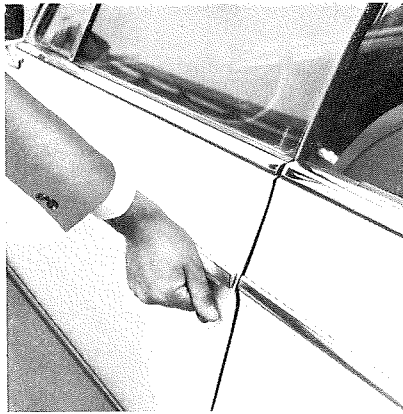
Use only the flat-type handles to close the doors. **Fig. 5**

The **electrical twin-tone horns** are operated by means of the push button in the centre of the rally steering wheel.

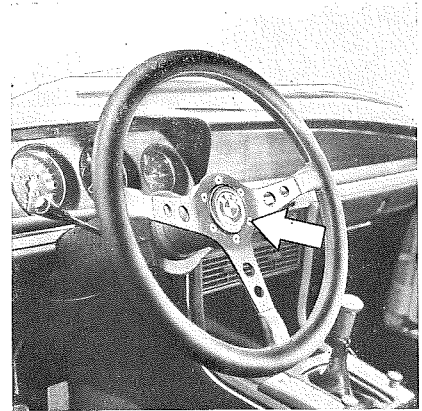
4



5



6



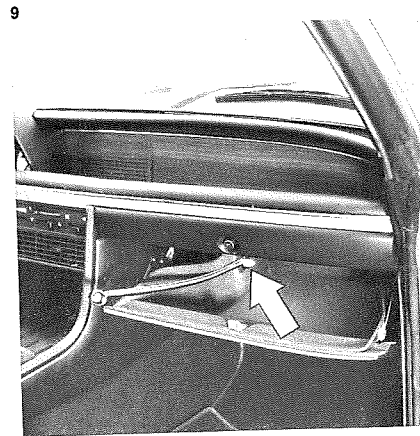
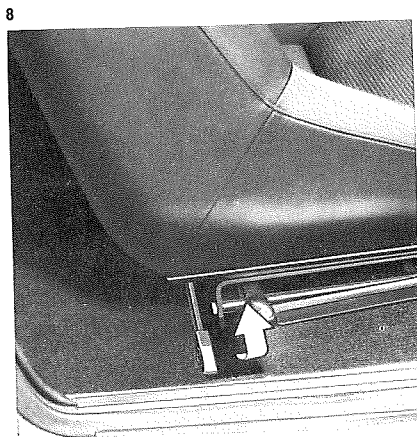
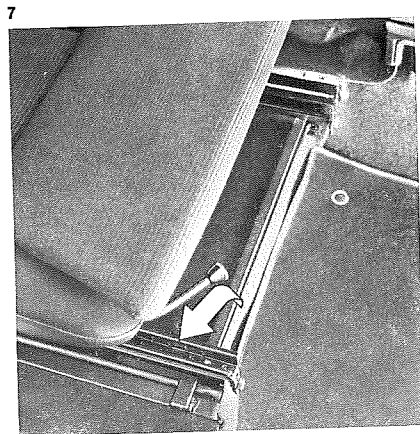
6 Seat adjustment, map-reading lamp

The **bucket-type seats** have a fore and aft adjustment. Pull up the lever at the front of the seat base, **Fig. 7**, and adjust seat to the required position. After releasing the lever ensure that the seat is locked in position.

To allow access to the rear of the passenger compartment lift the lever on the outside edge of the seat base and tilt the seat forward. **Fig. 8**

The seat locks automatically when returned to its original position.

A **map-reading lamp** is located in the right-hand glove box. It is switched on and off by pressing the push button. **Fig. 9**



Technical specifications

ENGINE

Capacity

effective 3003 c. c. (183,3 cu. in.)

Stroke/bore 80 x 89.25 mm (= 0.896)

3.1496 in. x 3.5137 in.

Torque/weight ratio

(unladen) 22.3 mkp (223 Nm)/1000 kg*

162 ft/lb per ton*

23.8 mkp (238 Nm)/1000 kg**

172 ft/lb per ton**

Power/weight ratio

in road trim, 12.8 lb/bhp (6.45 kg/PS)*

full tank 11.5 lb/bhp (5.80 kg/PS)**

all seats 20.1 lb/bhp (9.15 kg/PS)*

occupied plus 18.1 lb/bhp (8.25 kg/PS)**

luggage

Fuel system

Carburettor model

2 Zenith 35/40 INAT two-stage carbs.

Injection model

Electronically-controlled fuel injection system.

STEERING

Light-alloy leather-covered steering wheel dia. 15 in. (380 mm)

ZF-Gemmer hourglass worm and roller.

Steering box ratio 16.4 : 1

Overall ratio 18.9 : 1

FINAL DRIVE

ZF 'Lok-O-Matic' disc type limited slip differential.

* Carburettor model

** Fuel injection model

FRONT SUSPENSION

Bilstein spring/shock absorber struts and progressive springs. No stabilizer.

REAR SUSPENSION

Bilstein shock absorbers with progressive springs. No stabilizer.

WHEELS AND TYRES

Light-alloy wheels 7 J x 14 H 2

or 6 J x 14 H 2

Tyres 195/70 VR 14 (Michelin)

Winter tyres 175 SR 14, winter or studded tyres on 6 J x 14 H 2 rims.

Only fine-link RUD snow chains no. 07 728 770-185-14 can be used for 195/70 VR 14 tyres.

ELECTRICAL SYSTEM

Battery 12 V 36 Ah*, 55 Ah**.

Without heated rear window.

BODYWORK

Doors, engine compartment and luggage compartment lids of light alloy. Wind-screen, 2-layer safety glass "Glaverbell".

Rear window and rear side windows (non-opening) of plexiglass.

No front bumper, synthetic rear bumper. Light-weight bodywork without sound insulation linings.

Front bucket-type seats without headrests.

DIMENSIONS AND WEIGHTS

Length 182.3" (4630 mm)

Width 67.3" (1710 mm)

Height 53.9" (1370 mm)

Front track 56.9" (1466 mm)

Rear track 57.7" (1422 mm)

Unladen weight

(road trim, full tank) 2563 lb (1165 kg)

Max. perm. gross weight 3630 lb (1650 kg)

Perm. front axle load 1804 lb (820 kg)

Perm. rear axle load 1914 lb (870 kg)

Perm. trailer load

unbraked 1364 lb (620 kg)

braked 2200 lb (1000 kg)

PERFORMANCE

Acceleration

0-100 kph (0-62 mph)

7.3 secs.*

6.9 secs.**

Bayerische Motoren Werke AG München

Order No. 01 41 9 599 445 e. 0.5 XI.72 Printed in Western Germany ei.